



aparellaje electrotécnico, s.a.



Manufacturer of accessories,  
connections and electrical equipment

# About us

Aparel was established on the year 1972 by Mr. Lluís Puig Vila; initially with the trade name "Comercial Aparellajes Puig". Lately on November 1987 changed to the actual trade name of "Aparellaje Electrotécnico S.A.". Aparel is managed and directed by Mr. Pere Puig since 1998.

## History

In 2021 become part of Vicente Torns group and its name changed to Torns SAU

**Aparel** specialises in manufacturing and marketing materials for the low voltage electrical sector, as Spain's leading auxiliary company for major manufacturers in the sector.

The Aparel facilities currently occupy two buildings in the town of Rubí in the province of Barcelona, with a total production area of over 3,000m<sup>2</sup>.



Our technological and human team gives **aparel** the agility and flexibility to respond to any demand in the ever-changing electricity market, which has major fluctuations in demand, and we are specialists in manufacturing special parts, customised and tailored to our clients' requirements.



At its production warehouse near Barcelona, **aparel** has a surface treatment installation, with plating baths for silver, copper and tin coatings, giving us speed and autonomy in the finish of contact parts. It also gives us an added link with our clients, who outsource the final treatment of their own pieces to us.



For over 10 years, we at **aparel** have been broadening our distribution horizons beyond our borders, and the turnover of our export department now accounts for 40% of our production volume.



### QUALITY



### FLEXIBILITY



### SERVICE

At **aparel** we carry out **thorough checks** on all the products we deliver to our customers, **thereby ensuring that they operate perfectly**, with no problems for our clients.

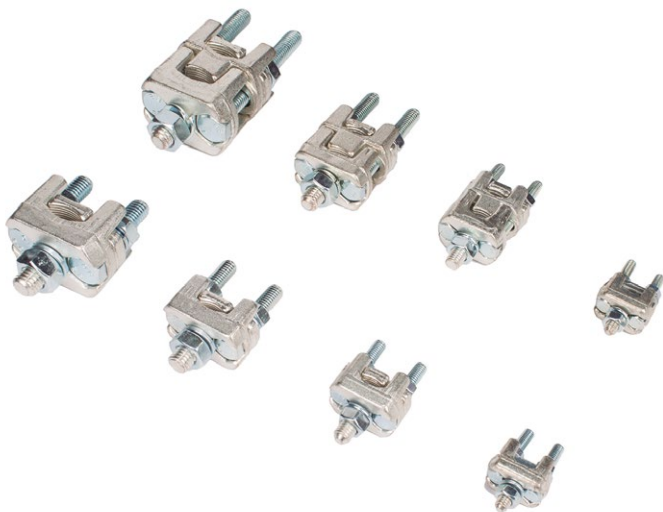
Thanks to the versatility of our employees and the flexibility of our structure, at **aparel** we **are specialists in supplying all kinds of production batches**. We can manufacture large batches automatically, and produce a small batch, all with **very tight delivery deadlines**.

We have close and friendly relationships with our clients, **deliver material in stock within 24 hours** and special productions in a week. This all makes the experience of working with us a pleasant and comfortable process for our clients.



## BIMETALIC CLAMPS

### ► Screwed bimetallic CLAMP



Reference	Denomination
11334120	BM-50
11334124	BM-50 D
11334130	BM-95
11334131	BM-95 D
11334140	BM-150
11334141	BM-150 D
11334150	BM-240
11334151	BM-240 D

### ► Spade CLAMPS



Reference	Denomination
11334018	BP-50; L=20 A=7
11334019	BP-50D; L=20 A=7

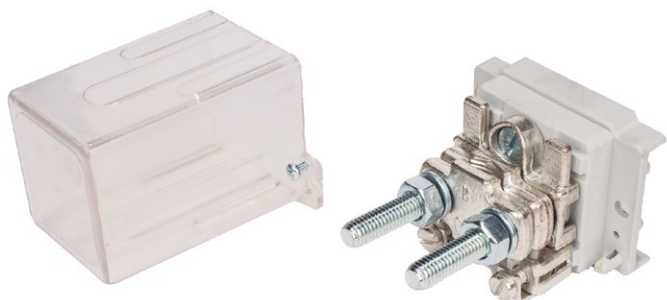
### ► Flag CLAMP



Reference	Denomination
11334302	BMB-150
11334303	BMB-150 D

## DERIBORNES

### ► COVERED DERIVATING CLAMPS



Reference	Denomination
11334801	BD 1x95 + 2x25
11334802	BD 2x95 + 2x25
11334803	BD 1x95 + 4x25
11334804	BD 2x95 + 4x25
11334805	BD 1x150 + 2x25
11334806	BD 2x150 + 2x25
11334807	BD 1x150 + 4x25
11334808	BD 2x150 + 4x25

### ► CLAMPS COVERS



Reference	Denomination
12330000	Clamp cover to 50 bimetalic clamp
12330001	Clamp cover to ground 50 bimetalic clamp

## NH FUSE BASES

### ► NH fuse base squad



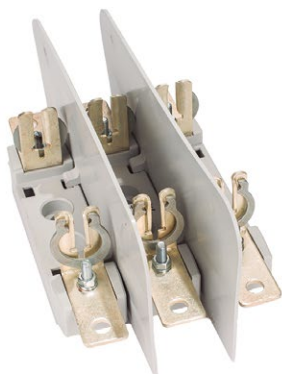
Reference	Denomination
11220110	Base NH-E T00 160A T/T
11220110-B	Base NH-E T00 160A Flange-Flange
11220111	Base NH-E T0 160A T/T
11220112	Base NH-E T1 250A T/T
11220113	Base NH-E T2 400A T/T

### ► Base NH Lira



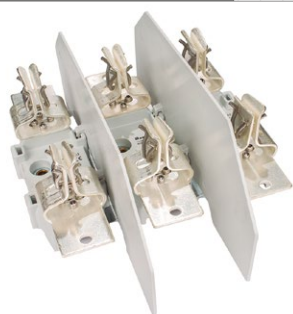
Reference	Denomination
11220210	Base NH-L T1 250A
11220211	Base NH-L T2 400A
11220212	Base NH-L T3 630A
11220213	Base NH-L T4 1250A
11220214	Base NH-L T4 1600A

### ► NH Tripolar Squad bases + 2 Screens



Reference	Denomination
11220300	Base III NH-E T00 160A
11220300-B	Base III NH-E T00 160A Flange-Flange
11220301	Base III NH-E T0 160A
11220302	Base III NH-E T1 250A
11220303	Base III NH-E T2 400A

► NH Tripolar Lira Bases +  
2 Screens



Reference

Denomination

11220306

Base III NH-L T1 250A

11220307

Base III NH-L T2 400A

11220308

Base III NH-L T3 630A

Aparel,  
manufacturers of electrical equipment since 1972



Technical advice

We solve your doubts so that you always choose the material that you need and that best suits to your installation



Permanent stock

Our wide catalog and stock allows you to have the product when you need it



Ships in 24/48 hours

One of our maxims is the speed of delivery so that your work is not interrupted while waiting for the material



Quality and flexibility

We adapt to each client, attending personally each request and with the guarantee of products of maximum quality

Do you need help with some product?  
Contact us



Pol. Ind. Can Jordi C/Compositor Bach 14-16 Rubí 08191



(+34) 93 840 53 96



offers@aparel.net

[www.aparel.net](http://www.aparel.net)

Made in Spain



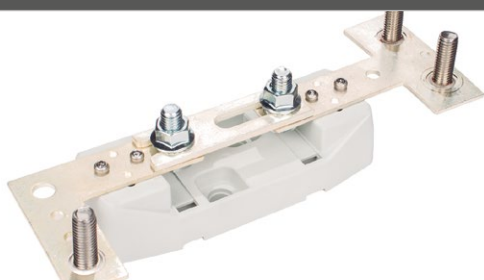
## SECTIONABLE NEUTRAL BASES

### ► Sectionable neutral base



Reference	Denomination
11221005	Sectionable neutral base T00 flange/flange
11221006	Sectionable neutral base T00 flange/Screw
11221007	Sectionable neutral base T00 Screw/Screw
11221040	Sectionable neutral base T0 screw/screw
11221050	Sectionable neutral base T1/2 screw/screw
11221060	Sectionable neutral base T3 screw/screw
11221027	Sectionable neutral base T1/2 E-7 (with return connection)

### ► Sectionable neutral base "T" and "L"



Reference	Denomination
11221025	Sectionable neutral base T1/2 E-10/Std. Inox screw
11221026	Sectionable neutral base T1/2 T/L Inox screw

### ► Sectionable neutral base CPM



Reference	Denomination
11221051	Neutral base T00 CPM/CMT
11221052	Neutral base T0 CPM/CMT
11221053	Neutral base T1/2 CPM/CMT

## BUC NH FUSE BASES

### ► Bases BUC NH



### Reference

91220400

### Denomination

Base BUC T00 160 A



## DISCONNECTING KNIFES / PARTITION WALLS

### ► Normalized disconnecting knife



#### Reference

#### Denomination

11222000	CS T00 100A 6 x 15 x 78,5
11222001	CS T0 160A 6 x 15 x 125
11222002	CS T1 250A 6 x 20 x 135
11222003	CS T2 400A 6 x 25 x 150
11222005	CS T4 1250A 8 x 50 x 200

### ► Standard disconnecting knife



#### Reference

#### Denomination

11222100	CS T2 400A 6 x 20 x 150
11222101	CS T3 630A 6 x 25 x 150

## ► Partition walls



Reference	Denomination
12225001	PS T00 pressure fixing 135 x 82
12225002	PS T0 pressure fixing 184 x 84
12225003	PS T1/2 pressure fixing 250 x 100
12225012	PS T3 pressure fixing 28 x 110
12225042	PS T4 pressure fixing squad 320 x 180

Do you need help with some product?  
Contact us



Pol. Ind. Can Jordi C/Compositor  
Bach 14-16 Rubí 08191



(+34) 93 840 53 96



[offers@aparel.net](mailto:offers@aparel.net)

[www.aparel.net](http://www.aparel.net)

Made in Spain

## UTE / Neozed Bases

### ► UTE fuse bases



#### Reference

#### Denomination

11440003	Cylindrical UTE sectionable base T1 14 x 51
11440007	Cylindrical UTE sectionable base T1 14 x 51 Neutro
11440005	Cylindrical UTE sectionable base T2 22 x 58
11440008	Cylindrical UTE sectionable base T2 22 x 58 Neutro
11440009	Multiple disconnecting Handle

### ► Neutral tube UTE



#### Reference

#### Denomination

11440012	Neutral tube T1 14 x 51
11440013	Neutral tube T2 22 x 58

### ► DO fuse links



#### Reference

#### Denomination

11440263	Fusible DO2 63A
11440380	Fusible DO3 80A
11440310	Fusible DO3 100A



► DO fuse links



Reference	Denomination
11441602-P	DO2 63A plastic base plate fastening
11441604	DO2 63A plastic base DIN rail fastening.
11441608-C	DO2 63A ceramic screw cap
11441607	DO2 base embellisher
11441610-P	DO3 100A plastic base plate fastening
11441612	DO3 100A base DIN rail fastening flange/flange connection
11441616-C	DO3 100A ceramic screw cap
11441615	DO3 base embellisher

Do you need help with some product?  
Contact us



Pol. Ind. Can Jordi C/Compositor  
Bach 14-16 Rubí 08191



(+34) 93 840 53 96



offers@aparel.net

[www.aparel.net](http://www.aparel.net)



## ACCESSORIES COUNTER CENTRALIZATIONS

### ► Metallic spacers



#### Reference

#### Denomination

16556010	Metallic spacer M.6 x 10
16556015	Metallic spacer M.6 x 15
16556020	Metallic spacer M.6 x 20
16556030	Metallic spacer M.6 x 30
16556040	Metallic spacer M.6 x 40
16556050	Metallic spacer M.6 x 50
16556060	Metallic spacer M.6 x 60
16556070	Metallic spacer M.6 x 70
16556080	Metallic spacer M.6 x 80
16556090	Metallic spacer M.6 x 90
16556100	Metallic spacer M.6 x 100

### ► Meter screw holder



#### Reference

#### Denomination

16550901	Brass kit
16550902	Plastic kit

### ► Sliding nuts



#### Reference

#### Denomination

16550105	TD 15 x 12 M.5
16550106	TD 15 x 12 M.6
16550206	TD 20 x 36 M.6
16550208	TD 20 x 36 M.8

► Insertable nuts



Reference

Denomination

16550204	TE-4 M.4
16550205	TE-5 M.5
16550206	TE-6 M.6
16550208	TE-8 M.8
16550210	TE-10 M.10
16550212	TE-12 M.12

► Polyester insulators (red)



Reference

Denomination

12550025	SM-25/6 (25 x 2 M6)
12550030	SM-30/8 (30 x 2 M8)
12550035	SM-35/8 (35 x 2 M8)
12550040	SM-40/8 (40 x 2 M8)
12550041	SM-40/10 (40 x 2 M10)
12550045	SM-45/8 (45 x 2 M8)
12550050	SM-50/10 (50 x 2 M10)
12550060	SM-60/10 (60 x 2 M10)
12550075	SM-75/10 (75 x 2 M10)

► Polyamide insulators



Reference

Denomination

12550130

H-30 Nut / Stud  
(30 x T/E M6)

► Derivating clamps



Reference

Denomination

11550015

BD-15 Derivating clamp

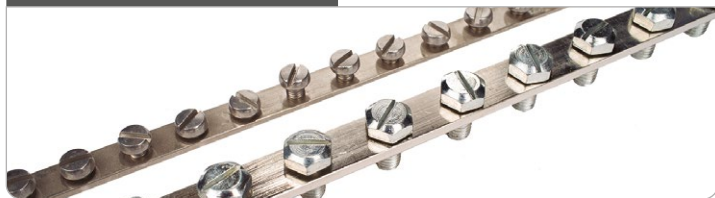
11550020

BD-20 Derivating clamp

11550025

BD-15/20 Derivating  
clamp

► Derivating plates

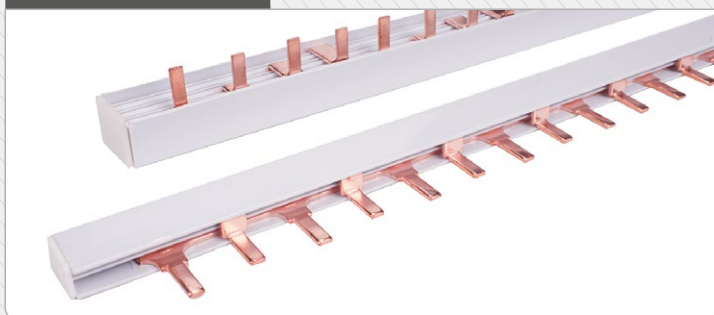


Reference

Denomination

11550123	PD 12x3 25A (56 screw DIN84 M.6x12)
11550154	PD 15x4 100A (40 screw DIN933 M.8x15)

► Plug in comb



Reference

Denomination

11992002	PCP-2 (Plug in comb II P pin.) (1 meter)
11992004	PCP-4 (Plug in comb IV P pin.) (1 meter)
11993002	Unipolar bridge cover
11993004	Four-way bridge cover

► Schuko sockets



Reference

Denomination

17991602	Schuko socket 16A, 2P+T IP-44 Surface
----------	--

► Bar holders



Reference

Denomination

12114360	Horizontal bar holders 360 FV reinforced
12114510	5/10 Holder



► Covers for lateral closing



Reference

Denomination

17990027

TCL-27 270 Cover for lateral closing without joint

17990036

TCL-36 360 Cover for lateral closing without joint

► Standard box joint clamp



Reference

Denomination

17991027

BU-27 Joint unión of 270 without joint

17991036

BU-36 Joint unión of 360 without joint

► Ventilation devices



Reference

Denomination

16990201

DVP-19 Small ventilation devices Ø19

16990202

DVP-29 Large ventilation devices Ø29

► Wire guide cone



Reference

Denomination

16990019

CN-19 (22 / 19)

16990028

CN-28 (31 / 28)

16990038

CN-38 (41 / 38)

16990047

CN-37 (50 / 47)

16990064

CN-64 (67 / 64)

16990090

CN-90 (96 / 90)

## ► Fixation ear



## Reference

16990400

## Denomination

Accessory for wall  
mounting

**Aparel,**  
manufacturers of electrical equipment since 1972



### Technical advice

We solve your doubts so that you always choose the material that you need and that best suits to your installation



### Permanent stock

Our wide catalog and stock allows you to have the product when you need it



### Ships in 24/48 hours

One of our maxims is the speed of delivery so that your work is not interrupted while waiting for the material



### Quality and flexibility

We adapt to each client, attending personally each request and with the guarantee of products of maximum quality

## Grounding accessories

### ► Grounding plates



#### Reference

#### Denomination

11002525	Galvanised Steel plate 250 x 250 x 2
11005050	Galvanised Steel plate 500 x 500 x 2
11001050	Galvanised Steel plate 1000 x 500 x 22
11005150	Copper plate 500 x 500 x 2

### ► Drilled copper busbar for ground



#### Reference

#### Denomination

11525155	5x15x2000 M6 Step 25mm
11525205	5x20x2000 M6 Step 25mm
11525305	5x30x2000 M6 Step 25mm

## CONNECTION PARTS FROM PLANS

At Apanel we specialise in manufacturing copper and aluminium parts from plans, for meeting the connection needs involved in our clients' production:

► Electrical cabinets.

► Generators.

► Transformers.

► Isolators.

► Capacitor banks.

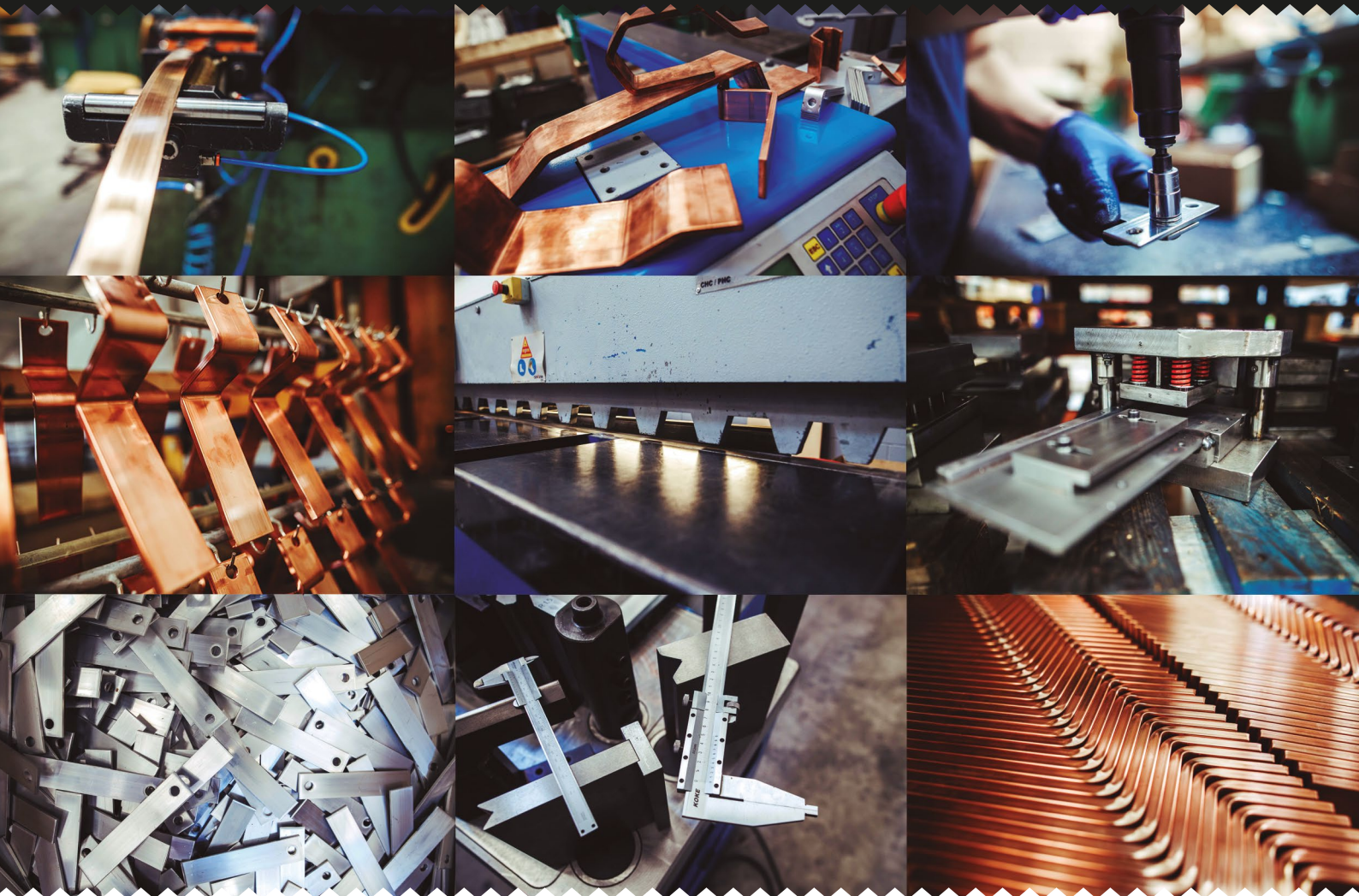
► Ballast units.

► Measuring equipment.

► Electrical switchgears.

We have integrated the entire process, from management of purchasing raw materials to the surface treatment of the piece if necessary, thereby providing a fast and effective service, checking the quality of the whole process, to ensure the parts operate correctly in our clients' equipment.





Our team of professionals will be happy to advise you on processes, recommend the materials that are most advisable for a particular case, advise you on supply possibilities, suggest modifications to save on costs... or any other questions that you or your team need answering.

Do you need help with some product?  
Contact us



Pol. Ind. Can Jordi C/Compositor  
Bach 14-16 Rubí 08191



(+34) 93 840 53 96



offers@aparel.net

[www.aparel.net](http://www.aparel.net)





## GALVANIC BATHS

At our galvanic bath facilities near Barcelona we have 300 m2 focused entirely on the surface treatment of parts for our products and clients in the electricity sector.

We have 2 automatic lines operating with a static charge with frames, or dynamically, with pumps.

### ► OUR WORK

We deal with **surface finishes** in **copper, silver and tin plating** on various non-ferrous materials. We are also specialists in **copper-plating cylindrical contacts for fuses**. These activities enable us to work for major European companies in the sector.

In addition to surface finishes, we have **machinery** for **degreasing parts** either before they receive **electrolytic treatment**, or for delivery to the client without any residues of cutting or punching oil.

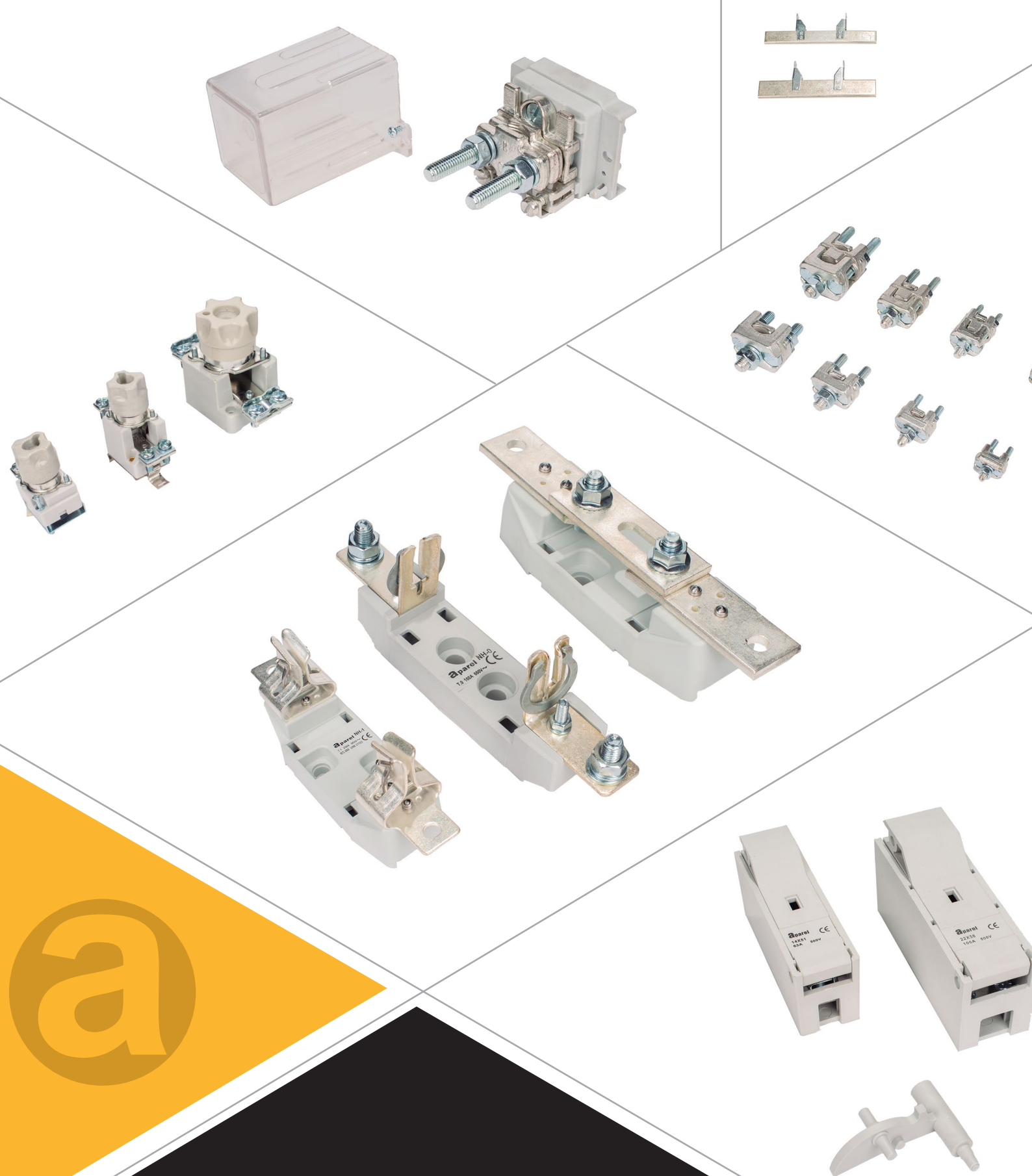
### ► WITH ALL THE GUARANTEES YOU EXPECT



For our clients' peace of mind, we issue **quality certificates** for the coatings we have provided. To do this, **we check the thicknesses** deposited in each batch **using x-ray fluorescence testing**.

At Aparen **we also respect the environment**. We carry out **continuous checks** on the waste generated at our facilities, using a highly developed filtration and recycling system for pollutants.





Do you need help with some product?  
Contact us



Pol. Ind. Can Jordi C/Compositor  
Bach 14-16 Rubí 08191

(+34) 93 840 53 96

[offers@aparel.net](mailto:offers@aparel.net)